



## ROMEO REGA MIXED-METAL W/ GLASS INSETS DINING TABLE



Vintage SIGNED Romeo Rega mixed-metals dining table with 9 glass insets (lightly smoked glass). The table is heavy and solid, a true design masterpiece from the 1970's. There are a few areas where the brass has taken on a darker patina. NOTE: THIS ITEM IS LOCATED AND WILL SHIP FROM OUR MIAMI, FLORIDA SHOWROOM.

### About the Designer: Romeo Rega

For his range of sophisticated modernist furniture, Romeo Rega worked with wrought iron, textiles, glass and more, yielding an amalgam of geometric shapes, sculptural flourishes and glamorous sensibility commonly associated with the Hollywood Regency style that remains popular today. For collectors in the know, vintage furniture made by the Italian designer's eponymous company is branded with his iconic double R logo, and Romeo Rega lighting, tables and other work is recognized globally for its seductive materials and dazzling forms.

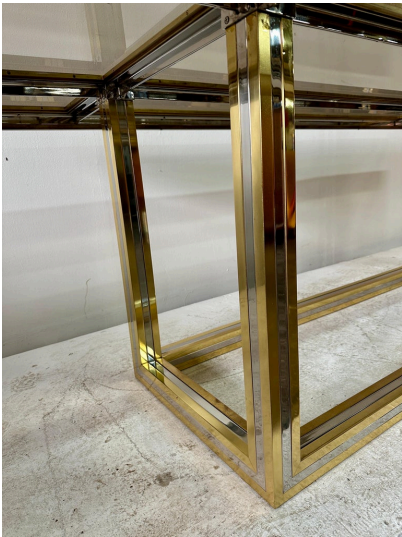
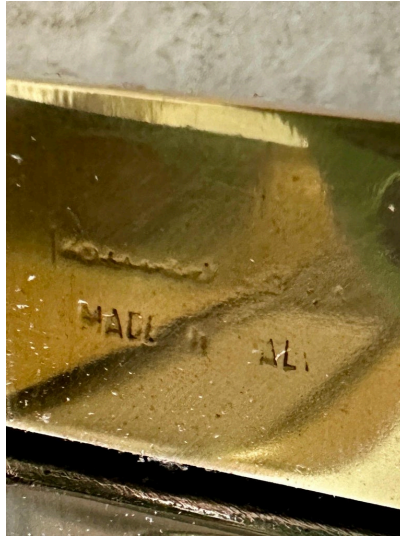
In the 1970s, the Rega trademark was put to use and the designer began to mass produce furniture — including chairs, console tables and more. Renowned designers like Willy Rizzo and Gabriella Crespi collaborated with the company over time but the production of now sought-after Romeo Rega furniture ceased during the 1980s.

Among Rega's clients were A-list Italian entertainment and cinema celebrities, and the company's furniture continues to be coveted by collectors today.

**SKU:** LU832838469042 | **Categories:** [Tables & Desks](#) | **Tags:** [Romeo Rega](#)



## GALLERY IMAGES



## ADDITIONAL INFORMATION

|                                 |  |
|---------------------------------|--|
| <b>Date of Manufacture</b>      | 1970's   |
| <b>Dimensions</b>               | Height: 29.5 in<br>Width: 94.5 in<br>Depth: 47.25 in |
| <b>Sold As</b>                  | Single Item  |
| <b>Materials and Techniques</b> | Brass, Chrome, Glass                                 |
| <b>Place of Origin</b>          | France   |
| <b>Period</b>                   | 1970 - 1979  |



**Condition**

Good - Wear consistent with age and use. Structurally sound, all glass is without any significant damages. The brass is some spots has taken on patina as the metals are unlacquered. This is being sold as-is and can be polished.

**Style**

Mid-Century Modern (Of the Period)

