

**SILVANA MAISANO BRONZE STUDY FOR THE SAN FRANCISCO MUSEUM OF MODERN ART**

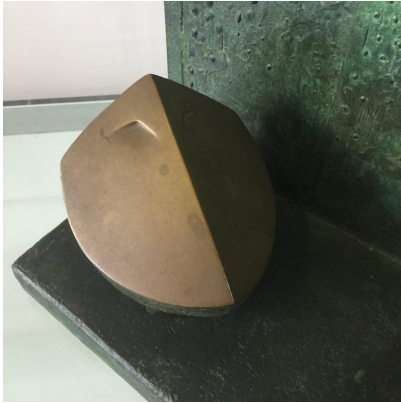
This amazing bronze, lost-wax casting of a study for the MOMA in San Francisco submitted by sculptor, Silvana Maisano in 1984. It is a fantastic sculpture with a wonderful patina. The architect of SF MOMA is Mario Buotta, a contemporary of Silvana Maisano. On the back there is the artist's stamp, autographed, and a label with the data of the work. Silvana Maisano, a Genoese artist and student of Edoardo Alfieri, has created several maquettes in bronze for doors.

Artist: Silvana Maisano (1952)

Born in 1952 in Albissola, Silvana Maisano was, with her sister Stefania, first a student, then an assistant to the sculptor Edoardo Alfieri, and since the death of the master in 1998, the universal heir of all his works and curator of the Alfieri-Maisano Archive. Silvan Maisano's artistic production is also mainly aimed at sculpture.

**SKU:** LU83284489403 | **Categories:** [Decorative Objects / Tabletop](#), [Sculptures](#) | **Tags:** [Edoardo Alfieri](#), [Silvana Maisano](#)

**GALLERY IMAGES**



## ADDITIONAL INFORMATION

<b>Date of Manufacture</b>	1980's
<b>Dimensions</b>	Height: 22 in Width: 16.25 in Depth: 7.75 in
<b>Sold As</b>	Single Item
<b>Materials and Techniques</b>	Bronze, Patinated
<b>Place of Origin</b>	Italy
<b>Period</b>	1980 – 1989
<b>Condition</b>	Good – Wear consistent with age and use. Normal patina to bronze throughout – see ALL detail images.

