



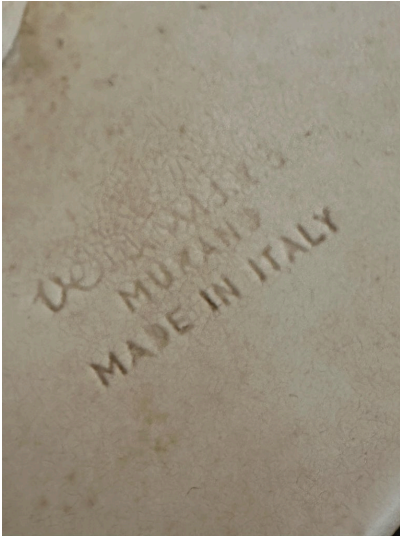
## TONI ZUCCHERI FOR VENINI TIERED MURANO CHANDELIER



This Large VENINI chandelier designed by Toni Zuccheri in 1950's for Venini glassworks has THREE (3) tiers. There is a lovely mixture of clear drip style Murano pieces with clear and light mossy green pieces. The signature is on the top of the Metal frame and provides THREE Edison bulbs. The fixture alone is 22 inches tall, and the chain and canopy shown is 43 inches long.

**SKU:** LU832847542372 | **Categories:** [Lighting](#) | **Tags:** [Murano Glass](#), [Tony Zuccheri](#), [Venini](#)

### GALLERY IMAGES



## ADDITIONAL INFORMATION

<b>Date of Manufacture</b>	1950's
<b>Dimensions</b>	Height: 22 in Diameter: 30 in
<b>Sold As</b>	Single Item
<b>Materials and Techniques</b>	Murano Glass
<b>Place of Origin</b>	Italy
<b>Period</b>	1950 - 1959
<b>Condition</b>	Good - Wear consistent with age and use. NO breaks, cracks or ANY issues. ALL perfect original condition. Metal and chain are also.

