



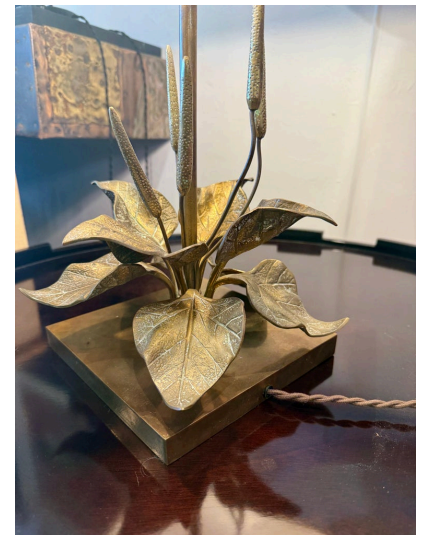
MAISON CHARLES TABLE LAMP W/ NATURAL FLORA ELEMENTS



Composed of a square gilded brass base on which rests two tiers of foliage distributed around the perimeter of the lamp and embellished with fine stylized lupine flower stems, all in gilded bronze. A tall gilded brass rod supports the original brass trimmed square shade.

SKU: LU832847566322 | **Categories:** [Lighting](#) | **Tags:** [Maison Charles et Fils](#)

GALLERY IMAGES



305.851.1347 | info@GustavoOlivieri.com



ADDITIONAL INFORMATION

Date of Manufacture	1970's
Dimensions	Height: 23 in Width: 9.5 in Depth: 9.5 in
Sold As	Single Item
Materials and Techniques	Brass, Bronze
Place of Origin	France
Period	1970 - 1979
Condition	Good - Rewired: New twisted silk cable and switch have been upgraded. Wear consistent with age and use. The ORIGINAL shade is aged and shows some staining from 75+ years of loving use. The brass trim is great and the fabric can be replaced. The patina to brass and bronze elements is outstanding and provides the desired look for a vintage piece.

