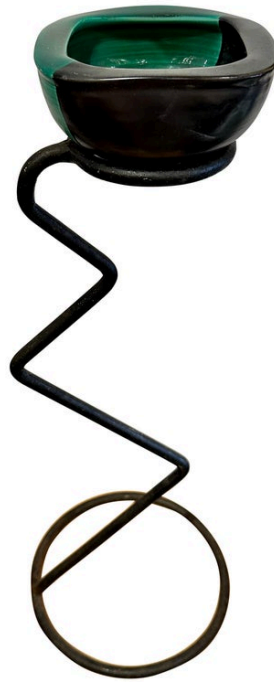




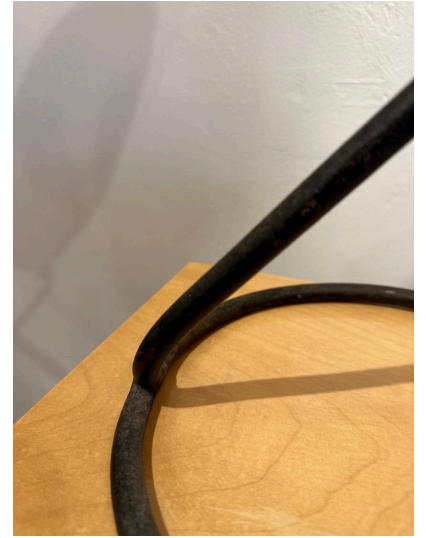
GEORGES JOUVE AND MATHIEU MATÉGOT STYLE CERAMIC STANDING VIDE-POCHE



Sculptural green and black ceramic catchall likely designed by Matégot and Georges Jouve. Iron frame with circular base, zig zag body and circular top. Green and black glazed ceramic dish sits inside the metal opening. Great lines and coloring. Very good vintage condition.

SKU: LU832831622082 | **Categories:** [Decorative Objects / Tabletop](#), [Sculptures](#), [Tables & Desks](#) | **Tags:** [Georges Jouve](#), [Mathieu Mategot](#)

GALLERY IMAGES



ADDITIONAL INFORMATION

Style	Mid-Century Modern (Of the Period)
Place of Origin	France
Date of Manufacture	1950's
Period	1950 - 1959
Materials and Techniques	Ceramic, Metal
Condition	Good - Wear consistent with age and use. metal has minimal wear and oxidization. The ceramic is wonderful without damages.
Wear	Good vintage condition



Dimensions

Height: 24.5 in

Width: 6 in

Depth: 6 in

