



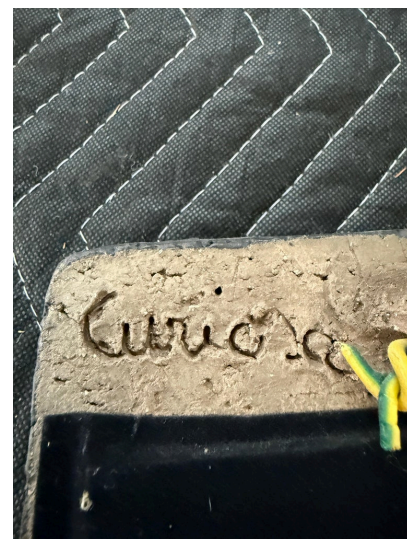
RED + BLACK CERAMIC MIRROR BY NATHALIE SOUFFLET, "CURIOSA" SERIES, FRANCE 21ST C



Nathalie Soufflet, a contemporary artist rooted in the artistic enclave of Vallauris, draws deeply from Amerindian influences. This ceramic mirror, with its abstract form, makes a striking statement in vivid glaze. The bold red and bluish black matte glaze reflects the vibrant, symbolic colors often found in indigenous art, capturing the spirit of a rich cultural heritage. Signed 'Curiosa NS' along the back edge.

SKU: LU832842872882 | **Categories:** [Mirrors](#), [Wall Decor](#) | **Tags:** [Nathalie Soufflet](#), [Tribal Style](#)

GALLERY IMAGES



ADDITIONAL INFORMATION

Style	Tribal (In the Style Of)
Date of Manufacture	21st Century
Dimensions	Height: 11.25 in Width: 8 in Depth: 1 in
Sold As	Single Item
Materials and Techniques	Ceramic, Mirror
Place of Origin	France
Period	21st Century

GUSTAVO OLIVIERI



Condition

Excellent

