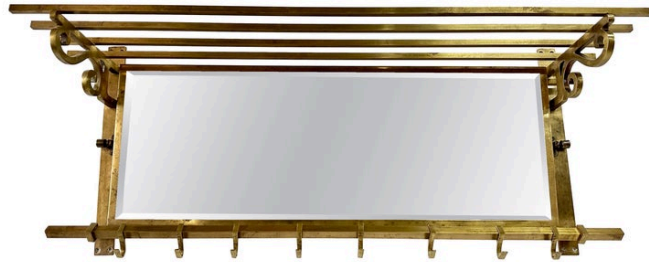




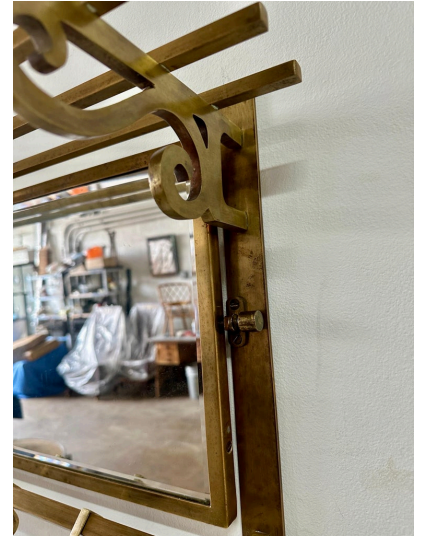
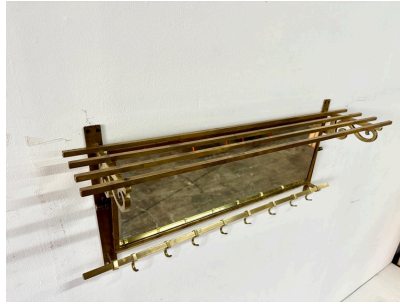
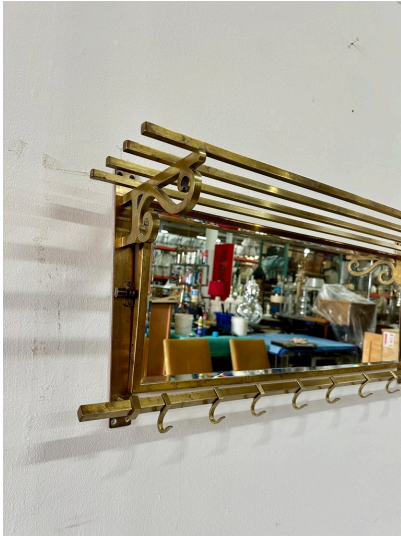
ITALIAN 1960'S BRASS & MIRROR WALL MOUNTED HAT/COAT RACK



This lovely vintage Italian wall mounted brass and mirror hat and coat rack - featuring brass hooks that slide along the lower rack for larger hanging items. The brass mirror is on a swivel mount and the the rest of this beauty is brass throughout. A solid and elegant piece. NOTE: THIS ITEM IS LOCATED AND WILL SHIP FROM OUR MIAMI, FLORIDA SHOWROOM.

SKU: LU832838469072 | **Categories:** [Mirrors](#), [Uncategorized](#), [Wall Decor](#) | **Tags:** [Coat Rack](#), [Hat Rack](#)

GALLERY IMAGES



ADDITIONAL INFORMATION

Style	Mid-Century Modern (Of the Period)
Date of Manufacture	1960's
Dimensions	Height: 15.75 in Width: 39 in Depth: 9 in
Sold As	Single item
Materials and Techniques	Brass, Mirror
Place of Origin	Italy
Period	1960 - 1069
Condition	Good - Wear consistent with age and use. No major issues, brass is clean with some minor patina here and there. The sliding hooks move easily. Mirror is in great shape.

