



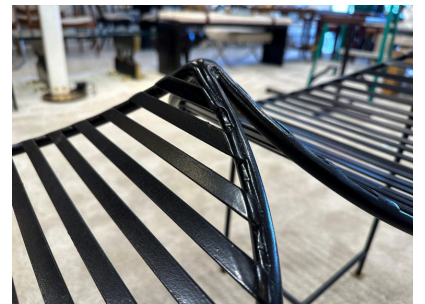
SCULPTURAL IRON EYELASH DESIGN BENCH



This wonderfully whimsical two-seat iron bench in black powder-coating and brass square feet, is a solid design element indoors or outdoors. The pictures are very accurate and the seats are VERY comfortable due to its curved design.

SKU: LU832831564422 | **Categories:** [Seating](#) | **Tags:** [Industrial](#)

GALLERY IMAGES





ADDITIONAL INFORMATION

Style	Industrial (in the style of)
Date of Manufacture	Late 20th Century
Dimensions	Height: 22.5 in
	Width: 41 in
	Depth: 17.5 in
	Seat Height: 17 in
Sold As	Single
Materials and Techniques	Iron, Powder-Coated
Place of Origin	USA
Period	20th Century
Condition	Good - Wear consistent with age and use. Very rustic finish but nothing major to note. It is SOLID and VERY comfortable.

