



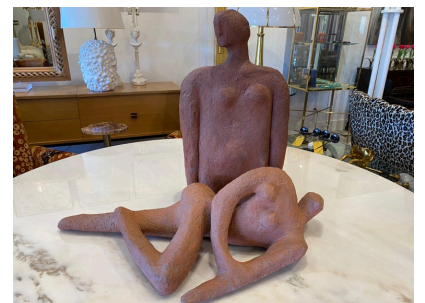
PAIR OF LARGE VINTAGE NUDE CLAY SCULPTURES INSPIRED BY HENRY MOORE



A heavy and oversized iron rough textured centerpiece/ bowl in the shape of a handkerchief in movement.

SKU: LU832830112082 | **Categories:** [Decorative Objects / Tabletop](#), [Sculptures](#) | **Tags:** [Henry Moore](#)

GALLERY IMAGES





ADDITIONAL INFORMATION

Weight	80 lbs
Style	brutal, abstract
Place of Origin	USA
Date of Manufacture	1960's
Period	1960's
Materials and Techniques	Clay
Condition	Good - Wear consistent with age and use. There are no chips, cracks or repairs, in VERY clean vintage condition.
Dimensions	Height: 22.5 in. Width: 12.5 in. Depth: 6 in.

