



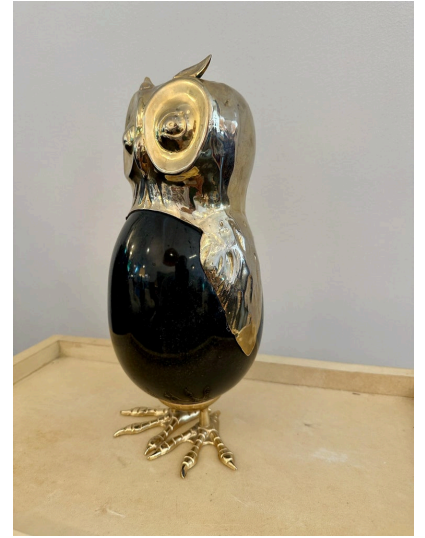
ANTHONY REDMILE STYLE STONE EGG AND BRASS OWL SCULPTURE



Darling as can be, this whimsical vintage owl sculpture made from gilded metal and a stone body. Not signed but possibly by Anthony Redmile. It is of very high quality in detail, craftsmanship and proportion.

SKU: LU832840086732 | **Categories:** [Decorative Objects / Tabletop](#), [Sculptures](#) | **Tags:** [Anthony Redmile Style](#)

GALLERY IMAGES



ADDITIONAL INFORMATION

Place of Origin	United Kingdom
Date of Manufacture	1970's
Period	1970 - 1979
Materials and Techniques	Brass, Stone
Condition	Good - Wear consistent with age and use. Shows normal patina and age/distress for its age.
Wear	Wear consistent with age and use.
Dimensions	Height: 11.5 in Width: 5 in Depth: 5 in



