



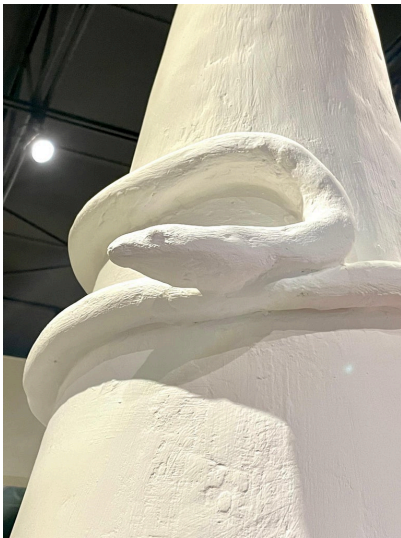
EXTRAORDINARY AND WHIMSICAL SERPENT PLASTER CONE PENDANT LIGHT



This is whimsical and beautiful with a large conical pendant flaring out. One edison bulb to interior provides ample light. The serpent wrapped to exterior is also made of plaster and just adds so much interest in this organic and simple designed light. Note: Full length with chain as shown here is 53 inches with canopy.

SKU: LU832826236712 | **Categories:** [Lighting](#) | **Tags:** [Gustavo Olivieri](#)

GALLERY IMAGES



ADDITIONAL INFORMATION

Weight	40 lbs
Dimensions	18.5 × 18.5 × 35 in
Similar to	Sirmos
Style	Mid-Century Modern (Of the Period)
Date of Manufacture	21st C
Dimensions	Height: 35 in. Diameter: 18.5 in.
Sold As	Single, 4 available
Materials and Techniques	plaster



Place of Origin	USA
Period	21st C.
Condition	Wear consistent with age and use. Wired and ready to hang, the plaster finish on this beauty is textured and irregular intentionally. There are NO damages.

