



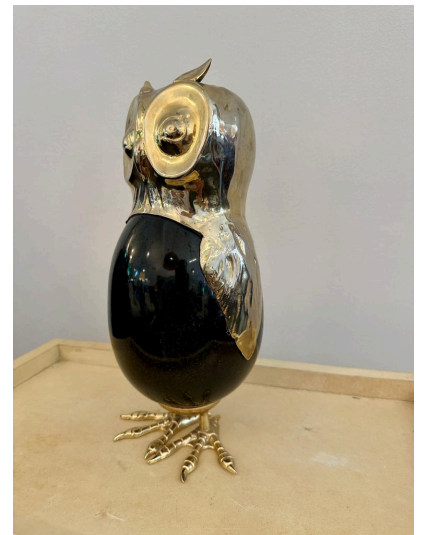
## ANTHONY REDMILE STYLE STONE EGG AND BRASS OWL SCULPTURE



Darling as can be, this whimsical vintage owl sculpture made from gilded metal and a stone body. Not signed but possibly by Anthony Redmile. It is of very high quality in detail, craftsmanship and proportion.

**SKU:** LU832840086732 | **Categories:** [Decorative Objects / Tabletop](#) | **Tags:** [Anthony Redmile Style](#)

### GALLERY IMAGES





## ADDITIONAL INFORMATION

<b>Place of Origin</b>	United Kingdom
<b>Date of Manufacture</b>	1970's
<b>Period</b>	1970 - 1979
<b>Materials and Techniques</b>	Brass, Stone
<b>Condition</b>	Good - Wear consistent with age and use. Shows normal patina and age/distress for its age.
<b>Wear</b>	Wear consistent with age and use.
<b>Dimensions</b>	Height: 11.5 in Width: 5 in Depth: 5 in

